

# Vordel SOAPbox

Testing for XML applications

Vordel SOAPbox allows developers to test the performance, scalability, and security of Web Services. Using SOAPbox, a developer can test how Web Services perform under load, how they deal with unexpected input, and what their traffic ceiling is.

Vordel SOAPbox highlights security tokens, XML Signatures, and encrypted content in XML documents. SOAPbox supports established security technologies such as SSL and HTTP-Auth, as well as next-generation security technologies such as WS-Security and SAML.

## Penetration testing

Create penetration tests based on your Web Service descriptions to verify if they are capable of withstanding attack. In penetration testing mode common vulnerabilities such as SQL Injection, fuzzing and XPath Injection are automatically added to test messages to simulate attacks from malicious users. In this way you can build automated security testing into regression testing.

## Stress test your Web Services

How do your Web Services perform under stress? What are your Web Service's traffic ceilings? What happens when they receive more traffic than they can cope with? Vordel SOAPbox answers these questions with comprehensive Web Services stress testing.

## Traffic simulation to test your application infrastructure

Use SOAPbox to create and run your own battery of tests against internal application servers and ESB (Enterprise Service Bus) platforms.

## Sample SOAP messages

Get started quickly with pre-built SOAP messages provided as standard.

## Application-Level Networking

SOAPbox creates signed and encrypted XML messages without any requirement for coding. It supports SSL, WS-Security, and SAML.

## Test Federated Identity deployments

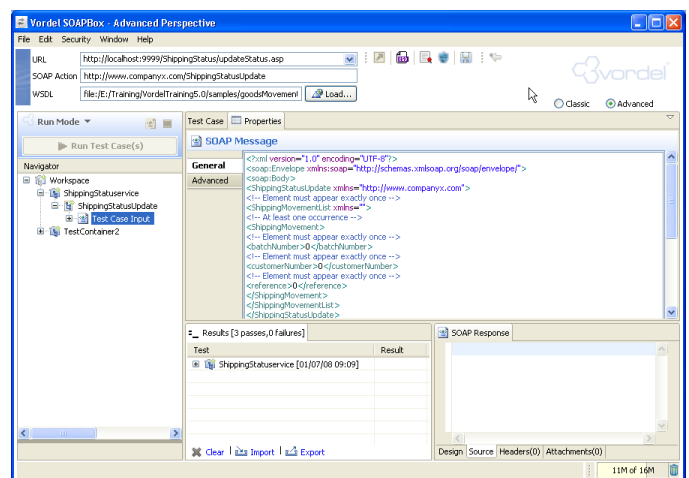
SOAPbox creates all three types of SAML assertions in order to test them against Federated Identity infrastructure. Creating SAML assertions using SOAPbox is significantly more simple than using a programming toolkit for the same purpose.

## Test XML, REST, or SOAP

Non-SOAP Web Services can be tested using SOAPbox (despite its name!). In addition, Web Services which are called using directly by browsers or using the XMLHttpRequest object can also be tested using SOAPbox.

## SOAP Attachments

SOAPbox can be used to attach SOAP attachments to SOAP messages, simply and easily.



Vordel SOAPbox advanced perspective

## Simple Graphical Keystore

Encryption key management is difficult using programming toolkits. SOAPbox makes key management into a point-and-click task using a graphical keystore. Users can load multiple keys and certificates without using command-line tools. With the keystore, it is possible to encrypt XML for multiple recipients in one simple step.

## Add or Remove Security Tokens

Automatically remove WS-Security security tokens from messages so that you can quickly and simply move on to your next test.

## Transfer Encoding

SOAPbox includes all the varieties of transfer encoding used by Web Services platforms.

## Testing tool for Design-Time Governance

In an SOA Governance environment, SOAPbox allows for policies to be tested and refined at Design Time, before they are deployed. This allows for a virtuous circle of service definition, policy definition, policy testing, and policy refinement.

## Vordel Offices

### Ireland

Vordel  
30 Pembroke street upper  
Dublin 2  
Tel: +353 1 234 2500

### US

Washington DC Metro Headquarters  
13800 Coppermine Rd. #306  
Herndon, VA. 20171  
Tel.: +1-866-460-0987

### UK

Devonshire House, Manor Way,  
Borehamwood  
WD6 1QQ, UK  
Tel: +44 208 731 4599

### Spain

Edificio Veganova  
Avda. de la Vega 1  
28108 Alcobendas, Madrid  
Tel:+34916572406

---

Vordel Datasheet, Copyright © 2000 – 2008 Vordel Limited. All rights reserved. All content in this datasheet is for general information and promotional purposes only and neither constitutes a technical specification nor an offer to enter into contractual relations with Vordel or with any other party; and Vordel reserves the right to alter such content without notice at any time. The trademarks, logos and service marks displayed herein are registered and unregistered trademarks of Vordel and others.