

## Managing your SOA with Centralized Policy Control

Vordel and HP together enable organizations to manage Web Services without compromising on service availability, security or performance. The joint solution makes use of open standards to allow architects to overlay management, monitoring and security onto their SOA networks. Best-of-breed products are used for both the Gateway and Service Registry/Repository components of the solution.

## Full Round Trip control and Security for your SOA

The combined Vordel Gateway and HP solution provides full lifecycle control, from service discovery through policy assignment, testing, to monitoring and enforcement.

Vordel Gateway discovers new unmanaged services, and brings them under the combined governance wing of HP SOA Systinet and Vordel Service Manager. The Vordel Service Manager applies policies to these services by simply dragging-and-dropping prebuilt policies onto the services. Vordel's market-leading Policy Studio interface creates custom policies which can then also be assigned to services. Service definitions, including their policies assigned by Vordel, are registered in the HP Systinet infrastructure. Open standards including WS-Policy and WS-PolicyAttachment are used for this step. HP Systinet includes an intuitive user interface with visual representation of all relationships and dependencies of a service. At runtime, Vordel enforces the assigned policies on the managed services, and also feeds monitoring information into the HP SOA Systinet infrastructure.

## Service Security via Service Virtualization

The Vordel Gateway provides Service Virtualization, which means that it provides managed virtual services which then map to the physical services in a SOA architecture. In this way, the Vordel Gateway can be used to provide a virtual REST service in front of a SOAP service, or to provide different service interface for different clients based on roles. Virtual services are registered by the Vordel service management toolset into the HP SOA Registry. Clients bind to the virtual service at the Vordel Gateway, protecting the physical service from direct access, and all requests are filtered via the policy before routing on to the appropriate back-end service.

Service virtualization provides a great degree of policy flexibility. Administrators can set policy rules to route different clients to different back-end services, apply protocol translation, and mitigate against incompatibilities between client services and back-end applications.

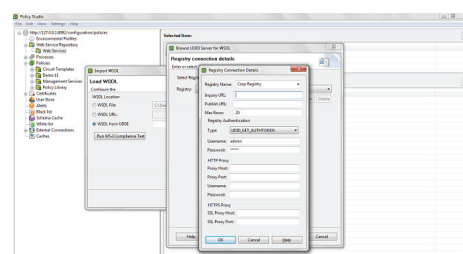
## Service control via Centralized Policy Management

It is important to balance the fact that policies must be managed centrally with the fact that the policies must be enforced across a service architecture. To address this requirement, HP SOA Systinet contains a single centralized repository for all services. Roles define what level of access and information is revealed to users accessing the repository. The Vordel Gateway can register these policies into the registry, and also make use of the policies at run-time to enforce rules on traffic.

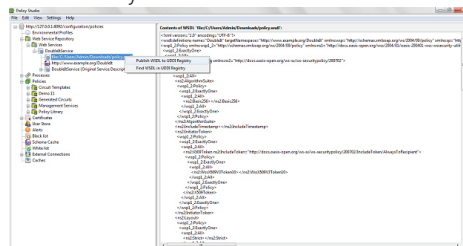


## GUI-based Configuration

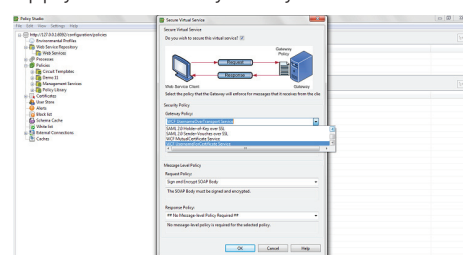
Quickly configure connection between Vordel Gateway and HP Systinet

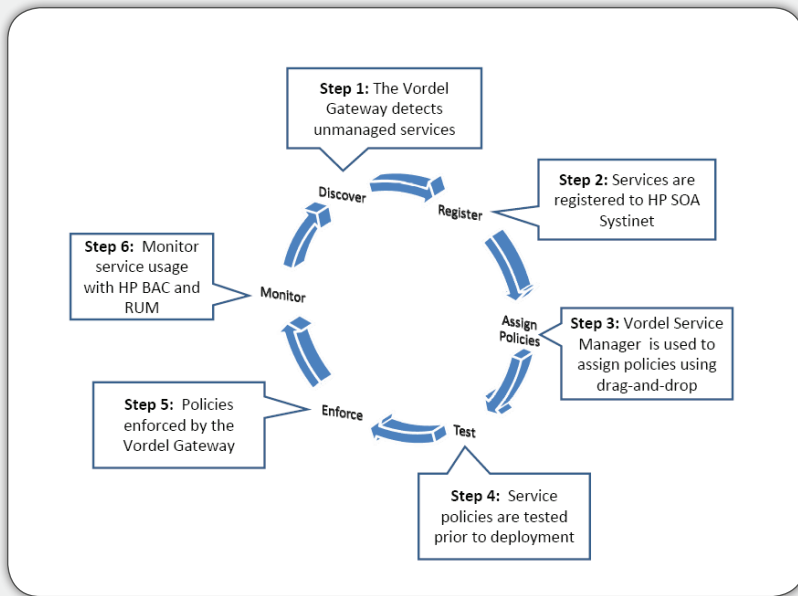


Register Virtualized Web Services to HP SOA Systinet



Apply WS-SecurityPolicy to Services





### Standards-based

Vordel and HP use WS-Policy and WS-PolicyAttachment to ensure that clients can successfully consume policies, across the broadest range of client platforms and frameworks such as .NET and Java. The Vordel Gateway allows for WS-SecurityPolicy to be bound to a Web Service definition, and then for this definition, with its associated policy, to be published to the HP Repository. Conversely, when a WSDL is imported from the HP Repository into the Vordel Gateway, the Vordel Gateway parses any associated policy information and presents that to the administrator user. Administrators can elect to enforce the policy at the Gateway, or to use the policy as a means to connect to the back-end Web Service.

### How it Works?

It is important to balance the fact that policies must be managed centrally with the fact that the policies must be enforced across a service architecture. To address this requirement, HP SOA Systinet contains a single centralized repository for all services. Roles define what level of access and information is revealed to users accessing the repository. The Vordel Gateway can register these policies into the registry, and also make use of the policies at runtime to enforce rules on traffic.

### Why choose this Solution?

The combination of Vordel Gateway with HP Systinet offers a number of important benefits including:

#### Full Control

- User defined access to the repository allows administrators and business users to see what is relevant to their role.
- Visual lifecycle stages quickly allow developers see where a stage is in the approval process and documentation attached to the service provides information on the policies associated with it.
- The Vordel Policy Studio allows custom policies to be created for specific service control requirements.
- All metrics and monitoring information is surfaced in the HP monitoring infrastructure.

#### Improved management and transparency

- SOA Architects can be confident that policies they mandate for particular Web Services are communicated to clients using open standards.
- Both real-time monitoring and historical reporting are provided.
- Testing is provided as a central point in the SOA lifecycle management.
- Centrally created policies are distributed across all relevant services.

#### SLA Enforcement

- SLA information is surfaced by the Vordel Gateway in the HP service management infrastructure. Administrators can see at a glance which services are running as expected and which are not performing.
- SLAs are enforced by the Vordel Gateway without adding latency to the traffic under management.

#### Speed to Market

- Drag-and-drop policy assignment in the Vordel Service Manager is fast and simple.
- Service Virtualization allows virtual interfaces to be rolled out quickly, because back-end services do not need to be changed.

#### Cost Savings

- This is an out-of-the-box solution and carries less cost than a custom solution for service management, while also being non-proprietary and standards-based.
- Detection of service performance problems allows for quick resolution and thus ensures that services are running at their peak capacity, thus saving costs.
- The Vordel HP solution encompasses all components of service lifecycle management, including service discovery, registration, testing, enforcement, and monitoring. This ensures cost savings because users do not need to go back to the market to fill any gaps in the solution.

#### Germany

Kaiserswerther Str. 115  
40 880 Ratingen  
Tel: +49 2102 420928

#### USA

275 Grove Street, Suite 2-400  
Newton MA 02466 02 02  
Tel: 1-(866)-460-0987

